

# ATX™ Linmaster™ LED Zone 1 Series Nonmetallic Luminaires

Standard or with Emergency Battery Backup  
Increased Safety

ATEX/IECEx: Zone 1 and 2 - 21 and 22 | II 2 GD | IK10  
IP66 / 67 / 68

## Applications

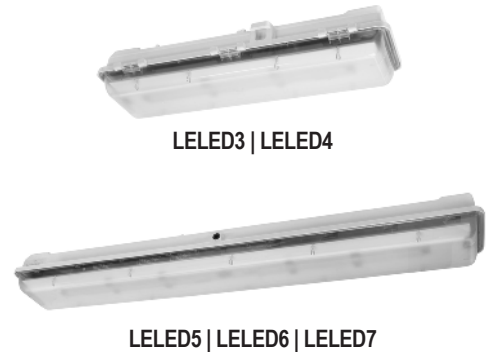
- For use in locations where:
  - Hazardous areas are designated as Zone 1 and 2 – 21 and 22
  - A high degree of corrosion resistance is required
  - Protection against dirt, water and moisture is necessary
- Typical applications include:
  - Oil refineries
  - Petrochemical facilities
  - Food processing plants
  - Waste and water treatment plants
  - Underground tunnels
  - General manufacturing facilities
  - Hydrogen and Biofuels plants
  - LNG (Liquid Natural Gas) plants

## Features

- Available in 5000K, 4000K, 3000K and 2200K Color Temperatures.
- Luminaire with optional green color LEDs is available.
- Easy to retrofit in same mounting footprint as the Appleton FE Series nonmetallic fluorescent luminaires and FELED Series nonmetallic LED luminaires, and nonmetallic fluorescent luminaires from different manufacturers.
- Full range of lumen outputs, with light distribution equivalent to the Appleton FE Series fluorescent luminaires and FELED Series nonmetallic LED luminaires.
- 0-10V dimming capable.
- To prevent deep discharge of the batteries, emergency luminaires can be ordered and shipped without batteries, then batteries can be ordered and shipped separately prior to installation in the field when needed.
- Corrosion-resistant fiberglass reinforced polyester body and hinged polycarbonate dome cover.
- Retention point integrated in the luminaire's housing for safety cable installation.
- High impact resistance housing (20 Joules – IK10) from -40 °C to +65 °C (-40 °F to +149 °F) ambient temperature and wind profile for use in extreme offshore and onshore environments.
- L70:

+25 °C (+77 °F)	Reported	> 102,000 hours
Ambient Temperature	Calculated	> 400,000 hours
+65 °C (+149 °F)	Reported	> 102,000 hours
Ambient Temperature	Calculated	> 264,000 hours

- Lightweight design, hinged cover with central lock system, and terminal block wiring for easy installation and maintenance.
- Contemporary, low profile design suitable for tight spaces.
- Standard screw-type terminal block can accept 4 mm<sup>2</sup>/6 mm<sup>2</sup> (flexible/rigid) wire.
- Field replaceable LED driver.
- Industry-leading thermal management for safe, reliable operation over wide temperature range.
- Universal, high efficiency drivers in standard luminaire models, cover voltage requirements for 100 to 277 Vac, 50/60 Hz for standard models. Optional DC voltages: 125-300 Vdc or 24-48 Vdc.
- Universal, high efficiency BMM in emergency luminaire models covers voltage requirements for 120 to 277 Vac, 50/60 Hz Vdc are available with the standard luminaire models.
- High power factor electronic driver (>0.95).
- Standard 6 kV surge suppression for Standard models and 4kV for emergency models.
- Appleton emergency exit labels can safely be secured on the polycarbonate dome cover.
- M20 plug or M25 plug provided.



- Latch assembly and elastomer gasket seals against water and dust ingress.
- Easily accessed for maintenance using Allen key or straight blade screwdriver.
- Central opening with unique patented release system to prevent damage.
- Can be horizontally or vertically mounted.
- Available in 1.5 H or 3 H emergency version, including built-in monthly self-test. Test results through multi-colored LED.
- Optional positive safety switch disconnects power to LED's and driver to allow maintenance in hazardous locations.
- 10 year standard warranty.

## Options

- Emergency/Battery Back-Up available for all models;
  - Add suffix **-H** to the end of the catalog number for 90 minutes. Example: LELED5CBUSADH
  - Add suffix **-E** to the end of the catalog number for 180 minutes. Example: LELED5CBUSADE

## Standard Materials

- Housing: fiberglass reinforced polyester
- Dome cover: polycarbonate
- Gasket: elastomer
- Mounting accessories available in different materials such as gray painted aluminum, zinc plated steel, galvanized steel or 316 stainless steel

## ATEX/IECEx Certifications and Compliances

- Certification Type: LELED
  - Gas: Zones 1 and 2
    - Conforming to ATEX 2014/34/EU: II 2 G
    - Type of Protection: Ex eb mb IIC Gb
    - Temperature Class: T4
  - Dust: Zones 21 and 22
    - Conforming to ATEX 2014/34/EU: II 2 D
    - Type of Protection: Ex tb IIIC Db
  - Standard Luminaire Ambient Temperature: -40 °C up to +65 °C (-40 °F up to +149 °F), refer to temperature codes table.
  - Emergency Luminaire Ambient Temperature: -20 °C up to +60 °C (-4 °F up to +140 °F)
  - ATEX Certificate: INERIS 24ATEX0001X
  - IECEx Certificate: IIECEx INE 24.0001X
- Standard and Emergency:
  - Index of Protection according EN/IEC 60529: IP66 / 67 / 68.
  - Impact Resistance (shock): IK10
  - Photobiological Safety, IEC 62778 and IEC 62471: RG0

# ATX™ Linmaster™ LED Zone 1 Series Nonmetallic Luminaires

Standard or with Emergency Battery Backup  
Increased Safety

ATEX/IECEX: Zone 1 and 2 - 21 and 22 | II 2 GD | IP66 | IK10

## Order Using Catalog Numbering Guide — ATX™ Linmaster Zone 1 Series Nonmetallic LED Luminaires

<p><b>LELED</b></p> <p>Series Prefix: LELED - Zone 1, 2, 21, 22 ATEX/IECEX Certified</p>	<p><b>3</b></p> <p>Lumen Output ①:</p> <p>3 - 3K 4 - 4K 5 - 5K 6 - 6K 7 - 7K</p>	<p><b>C</b></p> <p>Color Temperature (CCT): C - 5000K (Cool) N - 4000K (Neutral) W - 3000K (Warm) H - 2200K V - Green (Safety Showers)</p>	<p><b>BU</b></p> <p>Voltage:</p> <p>BU - 100 to 277 Vac, 50/60 Hz; 125-300 Vdc B2 - 24-48 Vdc ②</p>	<p><b>S</b></p> <p>Mounting Version: S - Surface/Suspension Mount Standard Wiring (single phase) L - Surface/Suspension Mount Dual Loop In/Out Through Wiring (single phase)</p>	<p><b>A</b></p> <p>Cable Entry: A - Armored M20 ③ U - Unarmored M20 ④ N - Unarmored M25 ④ R - Armored M25 ③</p>	<p><b>D</b></p> <p>Optic: Blank - Clear D - Diffused:</p>	<p><b>W</b></p> <p>Battery Pack: Blank - Emergency Luminaire with Battery Pack W - Emergency Luminaire without Battery Pack</p>	<p><b>E</b></p> <p>Emergency: Blank - No Emergency R - 90 minutes (non-maintained) H - 90 minutes (maintained) E - 180 minutes (maintained)</p>	<p><b>F</b></p> <p>Cutoff Switch: Blank - No switch F - With cutoff switch ⑤</p>
--	--	--	---	--	---	---	---	---	--

LED Luminaires | Linear | Increased Safety | ATEX / IECEX

① All values displayed reflect typical values (+/- 10%).

② DC voltages can only be used with IECEX certified standard luminaires. Not available with ATEX certification.

③ Must order armored cable glands separately.

④ Cable glands provided in luminaires with unarmored hub entries.

⑤ Select to have cutoff switch with standard or emergency model.

# ATX™ Linmaster™ LED Zone 1 Series Nonmetallic Luminaires

Standard or with Emergency Battery Backup  
Increased Safety

ATEX/IECEX: Zone 1 and 2 - 21 and 22 | Ⓢ II 2 GD | IP66 | IK10

## Lumen Output (Efficacy) ①

Model	Fluorescent Equivalency	Light Distribution Pattern	CCT (Correlated Color Temperature)	CRI (Color Rendering Index)	Lumen Output	Efficacy (lm/W)	CCT	CRI	Lumen Output	Efficacy (lm/W)	CCT	CRI	Lumen Output	Efficacy (lm/W)
<b>Clear Cover — Standard Mode</b>														
LELED3	3 x 18W	Linear	3000K	≥80	3235	124	4000K	≥80	3429	132	5000K	≥80	3420	134
LELED4	2 x 36W	Linear	3000K	≥80	3712	124	4000K	≥80	3933	131	5000K	≥80	4010	134
LELED5	3 x 36W	Linear	3000K	≥80	5401	129	4000K	≥80	5722	136	5000K	≥80	5819	138
LELED6	2 x 58W	Linear	3000K	≥80	6115	120	4000K	≥80	6479	127	5000K	≥80	6572	129
LELED7	3 x 58W	Linear	3000K	≥80	6928	122	4000K	≥80	7341	129	5000K	≥80	7504	132
<b>Clear Cover — Emergency Model   90 Minutes</b>														
LELED3*H	3 x 18W	Linear	3000K	≥80	3235   1185	101	4000K	≥80	3429   1256	107	5000K	≥80	3480   1278	109
LELED4*H	2 x 36W	Linear	3000K	≥80	3712   1185	100	4000K	≥80	3933   1256	106	5000K	≥80	4010   1278	108
LELED5*H	3 x 36W	Linear	3000K	≥80	5401   1374	113	4000K	≥80	5722   1456	119	5000K	≥80	5819   1482	121
LELED6*H	2 x 58W	Linear	3000K	≥80	6115   1374	107	4000K	≥80	6479   1456	114	5000K	≥80	6572   1482	115
LELED7*H	3 x 58W	Linear	3000K	≥80	6928   1374	110	4000K	≥80	7341   1456	117	5000K	≥80	7504   1482	119
<b>Clear Cover — Emergency Model   180 Minutes</b>														
LELED3*E	3 x 18W	Linear	3000K	≥80	3235   687	101	4000K	≥80	3429   728	107	5000K	≥80	3480   741	109
LELED4*E	2 x 36W	Linear	3000K	≥80	3712   687	100	4000K	≥80	3933   728	106	5000K	≥80	4010   741	108
LELED5*E	3 x 36W	Linear	3000K	≥80	5401   703	113	4000K	≥80	5722   745	119	5000K	≥80	5819   758	121
LELED6*E	2 x 58W	Linear	3000K	≥80	6115   703	107	4000K	≥80	6479   745	114	5000K	≥80	6572   758	115
LELED7*E	3 x 58W	Linear	3000K	≥80	6928   703	110	4000K	≥80	7341   745	117	5000K	≥80	7504   758	119
<b>Diffused Cover — Standard Model</b>														
LELED3	3 x 18W	Linear	3000K	≥80	2992	115	4000K	≥80	3172	122	5000K	≥80	3219	124
LELED4	2 x 36W	Linear	3000K	≥80	3434	114	4000K	≥80	3639	121	5000K	≥80	3710	124
LELED5	3 x 36W	Linear	3000K	≥80	5010.6	119	4000K	≥80	5308	126	5000K	≥80	5398	129
LELED6	2 x 58W	Linear	3000K	≥80	5673	111	4000K	≥80	6010	118	5000K	≥80	6097	120
LELED7	3 x 58W	Linear	3000K	≥80	6427	113	4000K	≥80	6810	119	5000K	≥80	6961	122
<b>Diffused Cover — Emergency Model   90 Minutes</b>														
LELED3*H	3 x 18W	Linear	3000K	≥80	2292   1102	94	4000K	≥80	3172   1167	99	5000K	≥80	3219   1188	101
LELED4*H	2 x 36W	Linear	3000K	≥80	3434   1102	93	4000K	≥80	3639   1167	98	5000K	≥80	3710   1188	100
LELED5*H	3 x 36W	Linear	3000K	≥80	5010   1278	104	4000K	≥80	5308   1354	111	5000K	≥80	5398   1378	112
LELED6*H	2 x 58W	Linear	3000K	≥80	5673   1278	100	4000K	≥80	6010   1354	105	5000K	≥80	6097   1378	107
LELED7*H	3 x 58W	Linear	3000K	≥80	6427   1278	102	4000K	≥80	6810   1354	108	5000K	≥80	6961   1378	110
<b>Diffused Cover — Emergency Model   180 Minutes</b>														
LELED3*E	3 x 18W	Linear	3000K	≥80	2292   639	94	4000K	≥80	3172   677	99	5000K	≥80	3219   689	101
LELED4*E	2 x 36W	Linear	3000K	≥80	3434   639	93	4000K	≥80	3639   677	98	5000K	≥80	3710   689	100
LELED5*E	3 x 36W	Linear	3000K	≥80	5010   654	104	4000K	≥80	5308   693	111	5000K	≥80	5398   705	112
LELED6*E	2 x 58W	Linear	3000K	≥80	5673   654	100	4000K	≥80	6010   693	105	5000K	≥80	6097   705	107
LELED7*E	3 x 58W	Linear	3000K	≥80	6427   654	102	4000K	≥80	6810   693	108	5000K	≥80	6961   705	110

① All values are typical (+/- 10%).

LED Luminaires | Linear | Increased Safety | ATEX / IECEX

# ATX™ Linmaster™ LED Zone 1 Series Nonmetallic Luminaires

Standard or with Emergency Battery Backup  
Increased Safety

ATEX/IECEX: Zone 1 and 2 - 21 and 22 | Ⓢ II 2 GD | IP66 | IK10

## Electrical Specifications — AC Driver at 230 Vac

Model	Voltage	Input Power (Watt)	Input Current (A)	Power Factor (PF)	Total Harmonic Distortion (THD)
<b>Standard Model</b>					
LELED3	230 Vac	26	0.118	>0.9	<20%
LELED4	230 Vac	30	0.136	>0.9	<20%
LELED5	230 Vac	42	0.186	>0.9	<20%
LELED6	230 Vac	51	0.225	>0.9	<20%
LELED7	230 Vac	57	0.251	>0.9	<20%
<b>Emergency Model   90 Minutes</b>					
LELED3*E	230 Vac	32	0.160	>0.8	<20%
LELED4*E	230 Vac	36	0.220	>0.8	<20%
LELED5*E	230 Vac	48	0.220	>0.9	<20%
LELED6*E	230 Vac	57	0.257	>0.9	<20%
LELED7*E	230 Vac	63	0.283	>0.9	<20%
<b>Emergency Model   180 Minutes</b>					
LELED3*H	230 Vac	32	0.160	>0.8	<20%
LELED4*H	230 Vac	36	0.220	>0.8	<20%
LELED5*H	230 Vac	48	0.220	>0.9	<20%
LELED6*H	230 Vac	57	0.257	>0.9	<20%
LELED7*H	230 Vac	63	0.283	>0.9	<20%

## Electrical Specifications — DC Driver at 24 Vdc

Model	Voltage	Input Power (Watt)	Input Current (A)	Power Factor (PF)	Total Harmonic Distortion (THD)
LELED3	24 Vdc	24	1.0	N/A	N/A
LELED4	24 Vdc	27	1.1	N/A	N/A
LELED5	24 Vdc	43	1.8	N/A	N/A
LELED6	24 Vdc	50	2.1	N/A	N/A
LELED7	24 Vdc	57	2.4	N/A	N/A

① All values are typical (tolerance +/-10%).

② Same electrical ratings apply to each luminaire with different LED position, mounting versions and cable entries.

# ATX™ Linmaster™ LED Zone 1 Series Nonmetallic Luminaires

Standard or with Emergency Battery Backup  
Increased Safety

ATEX/IECEx: Zone 1 and 2 - 21 and 22 | Ⓢ II 2 GD | IP66 | IK10

## Temperature Codes — Gas

Model Type	Gas — T Rating				
	Ta = +40 °C (+104 °F)	Ta = +50 °C (+122 °F)	Ta = +55 °C (+131 °F)	Ta = +60 °C (+140 °F)	Ta = +65 °C (+149 °F)
LELED3	T6	T5	T5	T4	T4
LELED4	T5	T4	T4	T4	—
LELED5	T6	T5	T5	T5	T4
LELED6	T6	T5	T5	T4	—
LELED7	T5	T4	T4	T4	—

## Temperature Codes — Dust

Model Type	Dust — Surface T°				
	Ta = +40 °C (+104 °F)	Ta = +50 °C (+122 °F)	Ta = +55 °C (+131 °F)	Ta = +60 °C (+140 °F)	Ta = +65 °C (+149 °F)
LELED3	+54 °C (+129 °F)	+64 °C (+147 °F)	+69 °C (+156 °F)	+74 °C (+165 °F)	+79 °C (+174 °F)
LELED4	+55 °C (+131 °F)	+65 °C (+149 °F)	+70 °C (+158 °F)	+75 °C (+167 °F)	—
LELED5	+53 °C (+127 °F)	+63 °C (+145 °F)	+68 °C (+154 °F)	+73 °C (+163 °F)	+78 °C (+172 °F)
LELED6	+54 °C (+129 °F)	+64 °C (+147 °F)	+69 °C (+156 °F)	+74 °C (+165 °F)	—
LELED7	+56 °C (+133 °F)	+66 °C (+151 °F)	+71 °C (+160 °F)	+76 °C (+169 °F)	—

## “T” Numbers Represent the Maximum Temperature

“T” #	T1	T2	T3	T4	T5	T6
Temp. Range °C (°F)	+301 to +450 (+547 to +842)	+201 to +300 (+394 to +572)	+136 to +200 (+277 to +392)	+101 to +135 (+214 to +275)	+86 to +100 (+187 to +212)	+85 (+185)

① Above temperature code tables are related to standard luminaires with AC driver only. To see the temperature codes for emergency luminaire or for standard luminaire with DC driver, refer to the instruction manual.

# ATX™ Linmaster™ LED Zone 1 Series Nonmetallic Luminaires

Standard or with Emergency Battery Backup  
Increased Safety

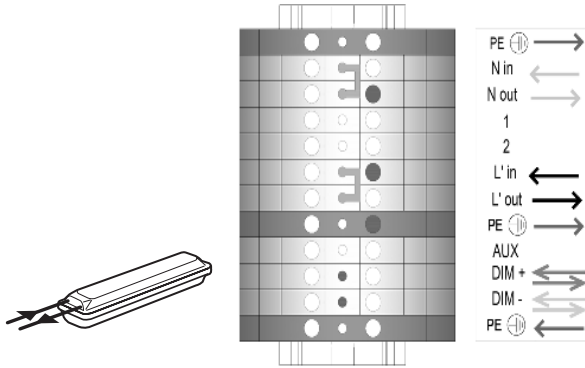
ATEX/IECEx: Zone 1 and 2 - 21 and 22 | II 2 GD | IP66 | IK10

## Wiring Diagrams

Version: S

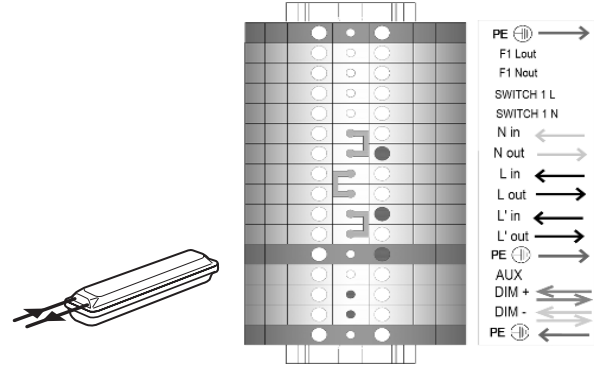
### Standard Model

Standard (Single Phase), 3 Entries, 1 at one end and 2 at the other



### Emergency Model

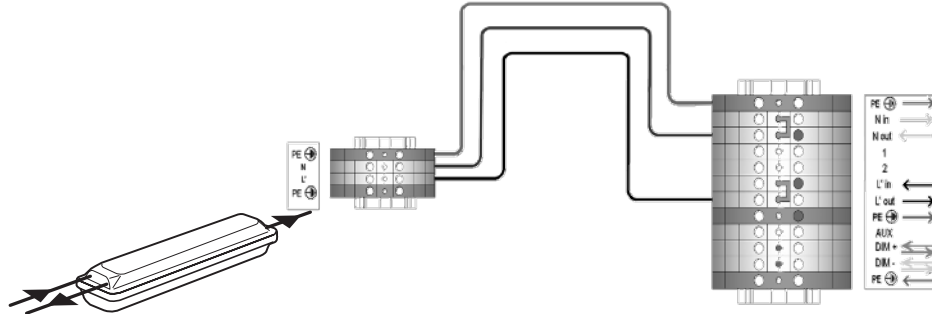
Standard (Single Phase), 3 Entries, 1 at one end and 2 at the other



Version : L

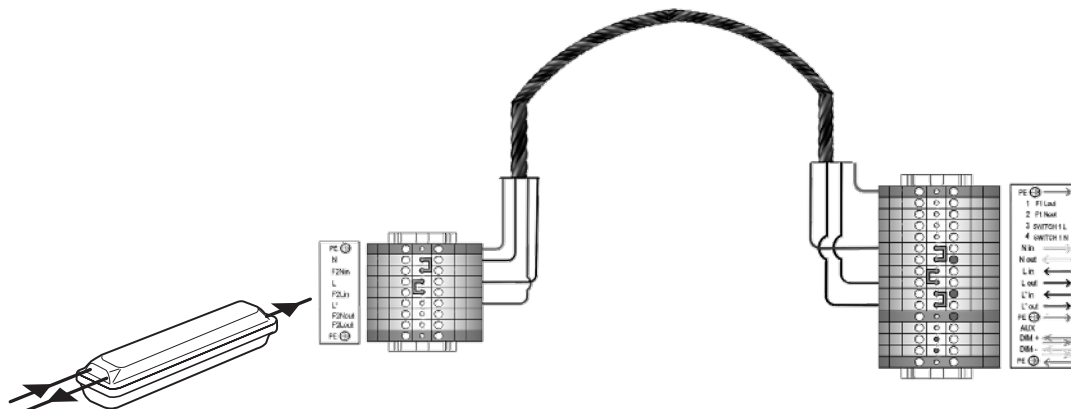
### Standard Model

Dual Loop In / Out — Through Wiring (Single Phase), 3 Entries, 1 at one end and 2 at the other



### Emergency Model

Dual Loop In / Out — Through Wiring (Single Phase), 3 Entries, 1 at one end and 2 at the other



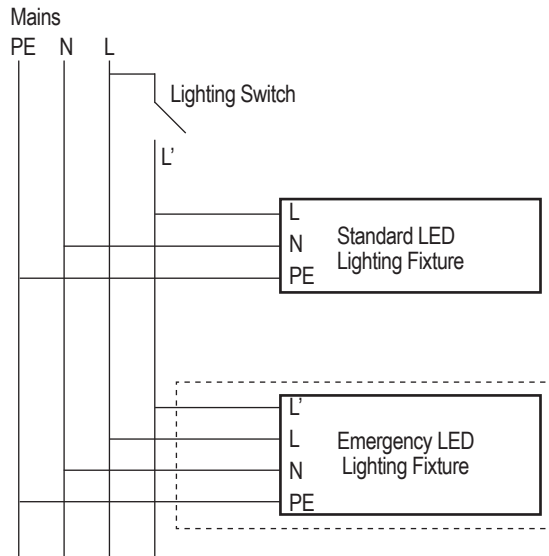
LED Luminaires | Linear | Increased Safety | ATEX / IECEx

# ATX™ Linmaster™ LED Zone 1 Series Nonmetallic Luminaires

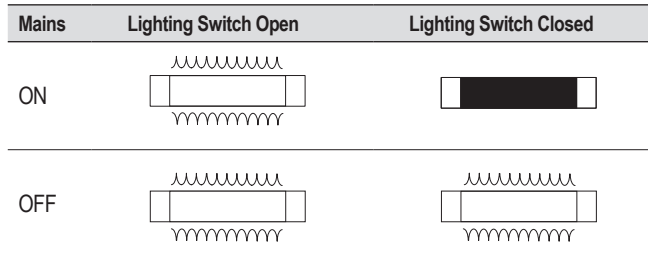
Standard or with Emergency Battery Backup  
Increased Safety

ATEX/IECEX: Zone 1 and 2- 21 and 22 | Ⓢ II 2 GD | IP66 | IK10

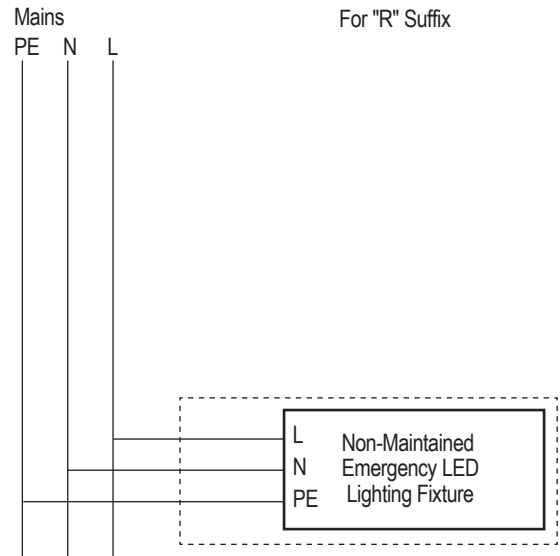
## Wiring Diagram for Maintained Emergency Linmaster



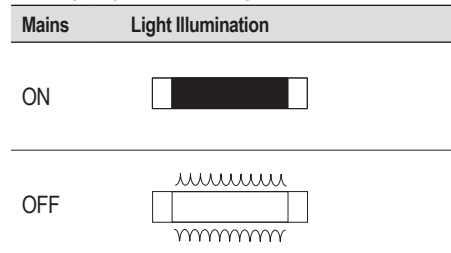
## Emergency Function Diagram - Maintained



## Wiring Diagram for Non-Maintained Emergency Linmaster



## Emergency Function Diagram - Non-Maintained



## LED Signals

Indicator Color	Timing	Function
Green	1 sec ON: 1 sec OFF	Normal charging ok, Battery not yet fully charged, No fault detected, Testing ok
Green	0.25 sec ON: 0.25 sec OFF	Functional / Duration Self-Test on-going
Green	Steady ON	Charging ok, Battery fully charged, No fault detected, Testing ok
Red	1 sec ON: 1 sec OFF	Fault condition, Installation issue, Battery is reverse, not connected, or shorted. Functional test failure, full duration test failure
LED Indicators OFF, LED Array ON	LED Indicators (Red and Green) OFF	No AC, Emergency mode ON

# ATX™ Linmaster™ LED Zone 1 Series Nonmetallic Luminaires

Standard or with Emergency Battery Backup

Increased Safety

ATEX/IECEx: Zone 1 and 2 - 21 and 22 | Ⓢ II 2 GD | IP66 | IK10

## Automatic Testing System (ATS) — Emergency Battery Backup Model — Functionality

At the completion of functional and full duration tests, and when AC power is present, LED indicators will display status of the emergency luminaire.




Functional Test	Full Duration Test
Starts within 24-48 hours after the initial power up of the luminaire	Starts within 5 to 26 days after the initial power up of the module
Occurs every 14 days after the initial aforementioned functional test	Occurs once every 364 days after the initial duration test
Lasts for 30 seconds	Lasts for full duration of the rated emergency period

At the completion of functional and full duration tests, LED indicator will display the status of the emergency luminaire when AC is present

## Emergency Light Duration

Lumen Level	Battery Capacity	Duration	Light Output	Duration	Light Output
3K (LNLED3)			5000K CCT: 741 lumens		5000K CCT: 1278 lumens
4K (LNLED4)			5000K CCT: 741 lumens		5000K CCT: 1278 lumens
5K (LNLED5)	6 Ah – 6V	180 minutes	5000K CCT: 758 lumens	90 minutes	5000K CCT: 1482 lumens
6K (LNLED6)			5000K CCT: 758 lumens		5000K CCT: 1482 lumens
7K (LNLED7)			5000K CCT: 758 lumens		5000K CCT: 1482 lumens

## Accessories and Replacement Parts

	Description	Weight in kg (lbs)	Catalog Number
<b>Replacement Dome Cover</b>	Diffused dome cover with gasket for 2ft Linmaster	0.8 (1.76)	LINDCVR2
	Diffused dome cover with gasket for 4ft Linmaster	1.4 (3.09)	LINDCVR4
	Clear dome cover with gasket for 2ft Linmaster	0.8 (1.76)	LINCCVR2
	Clear dome cover with gasket for 4ft Linmaster	1.4 (3.09)	LINCCVR4
<b>Replacement Battery Pack and BMM</b>	Replacement Battery pack (1 each)	0.73 (1.6)	BPILLED
	Replacement BMM (1 each)	0.65 (1.43)	BMMLLED ①
<b>Replacement Fuse Assembly</b>	Replacement fuse assembly (1 each)	0.02 (0.04)	APPFUSEZ1
<b>Safety Cable</b>	 Safety Cable — Stainless Steel	0.2 (0.4)	LEDSC
<b>Fixing Brackets for Surface Installation — Set of Two</b>	 Zinc plated steel	0.39 (0.85)	FEFBZ
<b>Brackets for Surface Mounting — Set of Two</b>	 316 stainless steel	0.64 (1.4)	FESBS






① Not CE Marked.

# ATX™ Linmaster™ LED Zone 1 Series Nonmetallic Luminaires

Standard or with Emergency Battery Backup  
Increased Safety

ATEX/IECEX: Zone 1 and 2 - 21 and 22 | II 2 GD | IP66 | IK10

## Accessories and Replacement Parts

	Description	Weight in kg (lbs)	Catalog Number	
<b>Hinged Brackets for Adjusting Luminaire</b>				
	Aluminum	0.75 (1.7)	FEHBA	
	316 stainless steel	0.57 (1.25)	FEHBS	
<b>M8 Ring Bolts — Set of Two</b>				
	Zinc plated steel	0.11 (0.2)	FERBM8Z	
<b>Half Clamps Brackets for Pole Mounting — Set of two</b>				
	<b>Diameter for 1-1/4" to 1-1/2" pole: 42 mm to 49 mm (1.65" to 1.93")</b>			
	• Zinc plated steel	0.34 (0.7)	FEHC49Z	
	• 316 stainless steel	0.34 (0.7)	FEHC49S	
	<b>Diameter for 2" pole: 60 mm (2.3")</b>			
	• Zinc plated steel	0.48 (1.1)	FEHC60Z	
	• 316 stainless steel	0.52 (1.2)	FEHC60S	
<b>Linmaster mounting bracket</b>				
	For 800mm mounting dimension	0.75 (1.7)	LNMB800	
<b>Fall Prevention Kit — Safety chain retains fixture temporarily to ease installation</b>				
	For M25 cable entry	0.76 (1.7)	FESCM25	
	For M20 cable entry	0.76 (1.7)	FESCM20	
	Description	Size in Millimeters (Inches)	Catalog Number	
	Warning label, straight arrow	Adhesive and divisible	327 x 109 (12.87 x 4.29)	BAESLABEL200 ①
	Warning label, inclined arrow	Adhesive and divisible	327 x 109 (12.87 x 4.29)	BAESLABEL201 ①

① Exit labels for use with only 3000lm model, BU driver and clear cover option.

# ATX™ Linmaster™ LED Zone 1 Series Nonmetallic Luminaires

Standard or with Emergency Battery Backup

Increased Safety

ATEX/IECEX: Zone 1 and 2 - 21 and 22 | Ⓢ II 2 GD | IP66 | IK10

## Replacement Drivers

Description	Weight in kg (lbs)	Catalog Number
LELED3CBU*, LELED3NBU*, LELED3WBU* Replacement Driver (1 each)	0.95 (2.09)	APMZ050L135UD48
LELED4CBU*, LELED4NBU*, LELED4WBU* Replacement Driver (1 each)	0.95 (2.09)	APMZ050L135UD56
LELED5CBU*, LELED5NBU*, LELED5WBU* Replacement Driver (1 each)	0.95 (2.09)	APMZ050L135UD84
LELED6CBU*, LELED6NBU*, LELED6WBU* Replacement Driver (1 each)	0.95 (2.09)	APMZ050L135UD96
LELED7CBU*, LELED7NBU*, LELED7WBU* Replacement Driver (1 each)	0.95 (2.09)	APMZ050L135UD10
LELED3HBU* Replacement Driver (1 each)	0.95 (2.09)	APMZ050L135UD42
LELED4HBU* Replacement Driver (1 each)	0.95 (2.09)	APMZ050L135UD46
LELED5HBU* Replacement Driver (1 each)	0.95 (2.09)	APMZ050L135UD89
LELED6HBU* Replacement Driver (1 each)	0.95 (2.09)	APMZ050L135UD92
LELED7HBU* Replacement Driver (1 each)	0.95 (2.09)	APMZ050L135UD95
LELED3VBU* Replacement Driver (1 each)	0.95 (2.09)	APMZ050L135UD3
LELED4VBU* Replacement Driver (1 each)	0.95 (2.09)	APMZ050L135UD30
LELED5VBU* Replacement Driver (1 each)	0.95 (2.09)	APMZ050L135UD31
LELED6VBU* Replacement Driver (1 each)	0.95 (2.09)	APMZ050L135UD3A
LELED7VBU* Replacement Driver (1 each)	0.95 (2.09)	APMZ050L135UD32
LELED3CB2*, LELED3NB2*, LELED3WB2* Replacement Driver (1 each)	0.95 (2.09)	APMZ050C130DC48
LELED4CB2*, LELED4NB2*, LELED4WB2* Replacement Driver (1 each)	0.95 (2.09)	APMZ050C130DC56
LELED5CB2*, LELED5NB2*, LELED5WB2* Replacement Driver (1 each)	0.95 (2.09)	APMZ050C130DC84
LELED6CB2*, LELED6NB2*, LELED6WB2* Replacement Driver (1 each)	0.95 (2.09)	APMZ050C130DC96
LELED7CB2*, LELED7NB2*, LELED7WB2* Replacement Driver (1 each)	0.95 (2.09)	APMZ050C130DC10
LELED3HB2* Replacement Driver (1 each)	0.95 (2.09)	APMZ050C130DC42
LELED4HB2* Replacement Driver (1 each)	0.95 (2.09)	APMZ050C130DC46
LELED5HB2* Replacement Driver (1 each)	0.95 (2.09)	APMZ050C130DC89
LELED6HB2* Replacement Driver (1 each)	0.95 (2.09)	APMZ050C130DC92
LELED7HB2* Replacement Driver (1 each)	0.95 (2.09)	APMZ050C130DC95
LELED3VB2* Replacement Driver (1 each)	0.95 (2.09)	APMZ050C130DC3
LELED4VB2* Replacement Driver (1 each)	0.95 (2.09)	APMZ050C130DC30
LELED5VB2* Replacement Driver (1 each)	0.95 (2.09)	APMZ050C130DC31
LELED6VB2* Replacement Driver (1 each)	0.95 (2.09)	APMZ050C130DC3A
LELED7VB2* Replacement Driver (1 each)	0.95 (2.09)	APMZ050C130DC32

Ⓢ Not CE Marked.

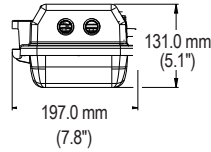
# ATX™ Linmaster™ LED Zone 1 Series Nonmetallic Luminaires

Standard or with Emergency Battery Backup  
Increased Safety

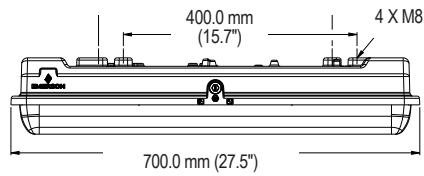
ATEX/IECEX: Zone 1 and 2 - 21 and 22 | Ⓢ II 2 GD | IP66 | IK10

## Luminaire Dimensions in Millimeters (Inches)

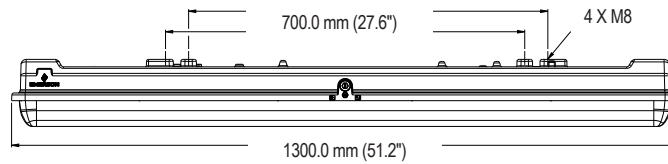
### End View



### Side View — 0.785 m (2.58 ft)



### Side View — 1.39 m (4.56 ft) Version



## Luminaire Specifications

Model	Length m (ft)	Weight in kg (lb)
<b>Standard Model</b>		
LELED3	0.7 (2.3)	5 (11)
LELED4		
LELED5	1.3 (4.3)	7.6 (16.7)
LELED6		
LELED7		
LELED3*E	0.7 (2.3)	6.4 (14.1)
LELED4*E		
LELED5*E	1.3 (4.3)	9 (19.8)
LELED6*E		
LELED7*E		
LELED3*H	0.7 (2.3)	6.4 (14.1)
LELED4*H		
LELED5*H	1.3 (4.3)	9 (19.8)
LELED6*H		
LELED7*H		

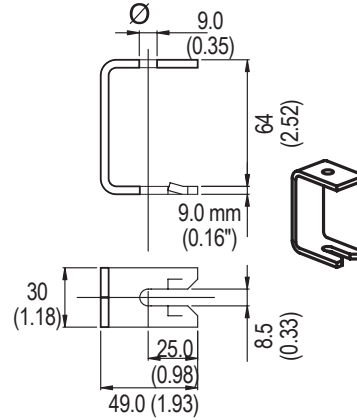
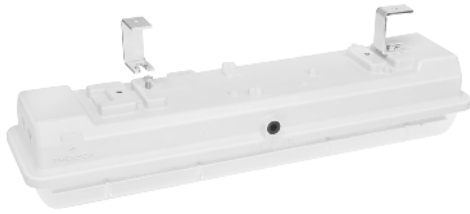
# ATX™ Linmaster™ LED Zone 1 Series Nonmetallic Luminaires

Standard or with Emergency Battery Backup  
Increased Safety

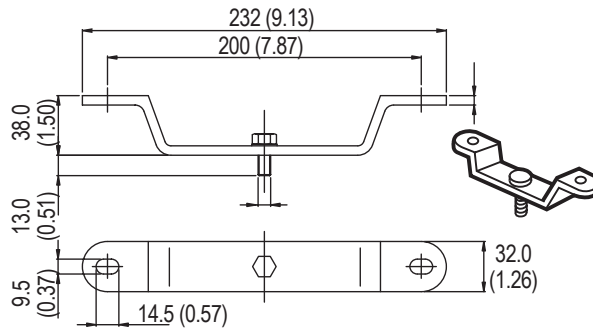
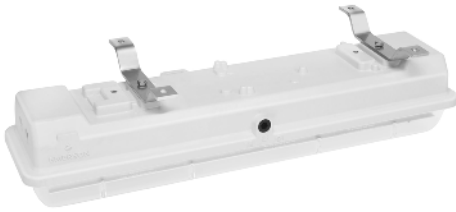
ATEX/IECEx: Zone 1 and 2 - 21 and 22 | Ⓢ II 2 GD | IP66 | IK10

## Mounting Options Dimensions in Millimeters (Inches)

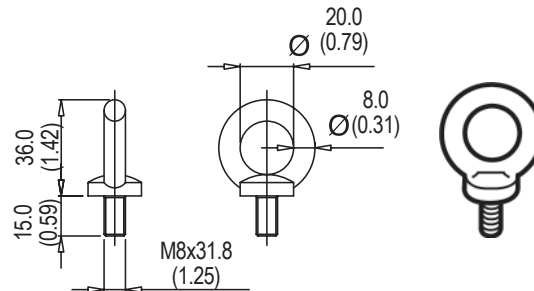
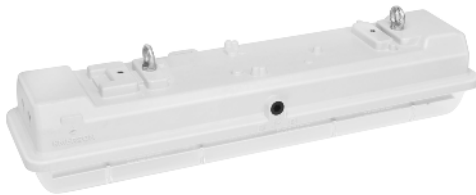
**FEBZ:** zinc plated steel — Set of two quick fixing brackets for ease of surface mounting



**FESBS:** 316 stainless steel — Set of two brackets for surface mounting



**FERBM8Z:** zinc plated steel — Set of two ring bolts



LED Luminaires | Linear | Increased Safety | ATEX / IECEx

