

ATX™ Linmaster™ LED Zone 2 Series Nonmetallic Luminaires

Standard or with Emergency Battery Backup
Increased Safety

ATEX/IECEx: Zone 2, 21 and 22 | Ⓢ II 3 GD, 2 D | IP66 | IK10

Applications

- For use in locations where:
 - Hazardous areas are designated as Zone 2, 21 and 22
 - A high degree of corrosion resistance is required
 - Protection against dirt, water and moisture is necessary
- Typical applications include:
 - Oil refineries
 - Petrochemical facilities
 - Food processing plants
 - Waste and water treatment plants
 - Underground tunnels
 - General manufacturing facilities
 - Hydrogen and Biofuels plants
 - LNG (Liquid Natural Gas) plants

Features

- Available in 5000K, 4000K, 3000K and 2200K Color Temperatures.
- Luminaire with optional green color LEDs is available.
- Easy to retrofit in same mounting footprint as the Appleton FN Series nonmetallic fluorescent luminaires and FNLED Series non-metallic LED luminaires, and nonmetallic fluorescent luminaires from different manufacturers.
- Full range of lumen outputs, with light distribution equivalent to the Appleton FN Series fluorescent luminaires and FNLED Series non-metallic LED luminaires.
- 0-10V dimming capable.
- To prevent deep discharge of the batteries, emergency luminaires can be ordered and shipped without batteries, then batteries can be ordered and shipped separately prior to installation in the field when needed.
- Corrosion-resistant fiberglass reinforced polyester body and hinged polycarbonate dome cover.
- Retention point integrated in the luminaire's housing for safety cable installation.
- High impact resistance housing (20 Joules – IK10) from -40 °C to +65 °C (-40 °F to +149 °F) ambient temperature and wind profile for use in extreme offshore and onshore environments.
- L70:

+25 °C (+77 °F)	Reported	> 102,000 hours
Ambient Temperature	Calculated	> 400,000 hours
+65 °C (+149 °F)	Reported	> 102,000 hours
Ambient Temperature	Calculated	> 264,000 hours

- Lightweight design, hinged cover with central lock system, and terminal block wiring for easy installation and maintenance.
- Contemporary, low profile design suitable for tight spaces.
- Standard screw-type terminal block can accept 1.5 to 6 mm² wire.
- Field replaceable LED driver.
- Industry-leading thermal management for safe, reliable operation over wide temperature range.
- Universal, high efficiency drivers in standard luminaire models, cover voltage requirements for 100 to 277 Vac, 50/60 Hz for standard and emergency models. Optional DC voltages: 125-300 Vdc or 24-48 Vdc are available with the standard luminaire models.
- High power factor electronic driver (>0.95).
- Surge suppression: 6kV for Standard models and 4kV for emergency models.
- Appleton emergency exit labels can safely be secured on the polycarbonate dome cover.
- M20 plug or M25 plug provided.
- Latch assembly and elastomer gasket seals against water and dust ingress.
- Easily accessed for maintenance using Allen key or straight blade screwdriver.



LNLED3 | LNLED4



LNLED5 | LNLED6 | LNLED7

- Central opening with unique patented release system to prevent damage.
- Can be horizontally or vertically mounted.
- Available in 1.5 H or 3 H emergency version, including built-in monthly self-test. Test results through multi-colored LED.
- Optional positive safety switch disconnects power to LED's and driver to allow maintenance in hazardous locations.
- 10 year standard warranty.

Options

- Emergency/Battery Back-Up available for all models;
 - Add suffix **-H** to the end of the catalog number for 90 minutes. Example: LNLED5CBUSADH
 - Add suffix **-E** to the end of the catalog number for 180 minutes. Example: LNLED5CBUSADE

Standard Materials

- Housing: fiberglass reinforced polyester
- Dome cover: polycarbonate
- Gasket: elastomer
- Mounting accessories available in different materials such as gray painted aluminum, zinc plated steel, galvanized steel or 316 stainless steel

ATEX/IECEx Certifications and Compliances

- Certification Type: LNLED
 - Gas: Zone 2
 - Conforming to ATEX 2014/34/EU: II 3 G
 - Type of Protection: Ex ec IIC Gc
 - Temperature Class: T5 to T3
 - Dust: Zone 21 and 22
 - Conforming to ATEX 2014/34/EU: II 3 D
 - Type of Protection: Ex tc IIIC Dc
- Ambient Temperature:
 - Standard Luminaire Ambient Temperature: -40 °C up to +65 °C (-40 °F up to +149 °F), refer to temperature codes table.
 - Emergency Luminaire Ambient Temperature: -20 °C up to +60 °C (-4 °F up to +140 °F)
- ATEX Certificate:
 - For II 2 D : INERIS 24ATEX0002X
 - For II 3 G : INERIS 24ATEX3001X
- IECEx Certificate: IECEx INE 24.0002X
- Index of Protection according EN/IEC 60529: IP66 / 67 / 68
- Impact Resistance (shock): IK10
- Photobiological Safety, IEC 62778 and IEC 62471: RGO

ATX™ Linmaster™ LED Zone 2 Series Nonmetallic Luminaires

Standard or with Emergency Battery Backup

Increased Safety

ATEX/IECEX: Zone 2, 21 and 22 | Ⓢ II 3 GD, 2 D | IP66 | IK10

Order Using Catalog Numbering Guide — ATX™ Linmaster Zone 2 Series Nonmetallic LED Luminaires

<p>LNLED</p> <p>Series Prefix: LNLED - Zone 2, 21, 22 ATEX/IECEX Certified</p>	<p>3</p> <p>Lumen Output ①:</p> <p>3 - 3K 4 - 4K 5 - 5K 6 - 6K 7 - 7K</p>	<p>C</p> <p>Color Temperature (CCT): C - 5000K (Cool) N - 4000K (Neutral) W - 3000K (Warm) H - 2200K V - Green (Safety Showers)</p>	<p>BU</p> <p>Voltage:</p> <p>BU - 100 to 277 Vac, 50/60 Hz; 125-300 Vdc B2 - 24-48 Vdc ②</p>	<p>S</p> <p>Mounting Version: S - Surface/Suspension Mount Standard Wiring (single phase) L - Surface/Suspension Mount Dual Loop In/Out Through Wiring (single phase)</p>	<p>A</p> <p>Cable Entry: A - Armored M20 ③ U - Unarmored M20 ④ N - Unarmored M25 ④ R - Armored M25 ③</p>	<p>D</p> <p>Optic: Blank - Clear D - Diffused</p>	<p>W</p> <p>Battery Pack: Blank - Emergency Luminaire with Battery Pack W - Emergency Luminaire without Battery Pack</p>	<p>E</p> <p>Emergency: Blank - No Emergency R - 90 minutes (non-maintained) H - 90 minutes (maintained) E - 180 minutes (maintained)</p>	<p>F</p> <p>Cutoff Switch: Blank - No switch F - With cutoff switch ⑤</p>
---	--	--	---	--	---	--	---	---	--

① All values displayed reflect typical values (+/- 10%).

② DC voltages can only be used with IECEX certified standard luminaires. Not available with ATEX certification.

③ Must order armored cable glands separately.

④ Cable glands provided in luminaires with unarmored hub entries.

⑤ Select to have cutoff switch with standard or emergency model.

ATX™ Linmaster™ LED Zone 2 Series Nonmetallic Luminaires

Standard or with Emergency Battery Backup
Increased Safety

ATEX/IECEX: Zone 2, 21 and 22 | Ⓢ II 3 GD, 2 D | IP66 | IK10

Lumen Output (Efficacy) ①

Model	Fluorescent Equivalency	Light Distribution Pattern	CCT (Correlated Color Temperature)	CRI (Color Rendering Index)	Lumen Output	Efficacy (lm/W)	CCT	CRI	Lumen Output	Efficacy (lm/W)	CCT	CRI	Lumen Output	Efficacy (lm/W)
Clear Cover — Standard Mode														
LNLED3	3 x 18W	Linear	3000K	≥80	3458	133	4000K	≥80	3666	141	5000K	≥80	3720	143
LNLED4	2 x 36W	Linear	3000K	≥80	3969	132	4000K	≥80	4205	140	5000K	≥80	4287	143
LELED5	3 x 36W	Linear	3000K	≥80	5800	138	4000K	≥80	6145	146	5000K	≥80	6249	149
LNLED6	2 x 58W	Linear	3000K	≥80	6566	129	4000K	≥80	6957	136	5000K	≥80	7057	138
LNLED7	3 x 58W	Linear	3000K	≥80	7440	131	4000K	≥80	7883	138	5000K	≥80	8058	141
Clear Cover — Emergency Model 90 Minutes														
LNLED3*H	3 x 18W	Linear	3000K	≥80	3458 1270	108	4000K	≥80	3666 1345	115	5000K	≥80	3720 1369	116
LNLED4*H	2 x 36W	Linear	3000K	≥80	3969 1270	107	4000K	≥80	4205 1345	114	5000K	≥80	4287 1369	116
LNLED5*H	3 x 36W	Linear	3000K	≥80	5800 1472	121	4000K	≥80	6145 1560	128	5000K	≥80	6249 1587	130
LNLED6*H	2 x 58W	Linear	3000K	≥80	6566 1472	115	4000K	≥80	6957 1560	122	5000K	≥80	7057 1587	124
LNLED7*H	3 x 58W	Linear	3000K	≥80	7440 1472	118	4000K	≥80	7883 1560	125	5000K	≥80	8058 1587	128
Clear Cover — Emergency Model 180 Minutes														
LNLED3*E	3 x 18W	Linear	3000K	≥80	3458 736	108	4000K	≥80	3666 780	115	5000K	≥80	3720 794	116
LNLED4*E	2 x 36W	Linear	3000K	≥80	3969 736	107	4000K	≥80	4205 780	114	5000K	≥80	4287 794	116
LNLED5*E	3 x 36W	Linear	3000K	≥80	5800 751	121	4000K	≥80	6145 798	128	5000K	≥80	6249 812	130
LNLED6*E	2 x 58W	Linear	3000K	≥80	6566 751	115	4000K	≥80	6957 798	122	5000K	≥80	7057 812	124
LNLED7*E	3 x 58W	Linear	3000K	≥80	7440 751	118	4000K	≥80	7883 798	125	5000K	≥80	8058 812	128
Diffused Cover — Standard Model														
LNLED3	3 x 18W	Linear	3000K	≥80	3218	124	4000K	≥80	3411	131	5000K	≥80	3461	133
LNLED4	2 x 36W	Linear	3000K	≥80	3694	123	4000K	≥80	3913	130	5000K	≥80	3990	133
LNLED5	3 x 36W	Linear	3000K	≥80	5391	128	4000K	≥80	5712	136	5000K	≥80	5809	138
LNLED6	2 x 58W	Linear	3000K	≥80	6104	120	4000K	≥80	6467	127	5000K	≥80	6561	129
LNLED7	3 x 58W	Linear	3000K	≥80	6916	121	4000K	≥80	7327	129	5000K	≥80	7490	131
Diffused Cover — Emergency Model 90 Minutes														
LNLED3*H	3 x 18W	Linear	3000K	≥80	3218 1185	101	4000K	≥80	3411 1256	107	5000K	≥80	3461 1278	108
LNLED4*H	2 x 36W	Linear	3000K	≥80	3694 1185	100	4000K	≥80	3913 1256	106	5000K	≥80	3990 1278	108
LNLED5*H	3 x 36W	Linear	3000K	≥80	5391 1374	112	4000K	≥80	5712 1456	119	5000K	≥80	5809 1482	121
LNLED6*H	2 x 58W	Linear	3000K	≥80	6104 1374	107	4000K	≥80	6467 1456	113	5000K	≥80	6561 1482	115
LNLED7*H	3 x 58W	Linear	3000K	≥80	6916 1374	110	4000K	≥80	7327 1456	116	5000K	≥80	7490 1482	119
Diffused Cover — Emergency Model 180 Minutes														
LNLED3*E	3 x 18W	Linear	3000K	≥80	3218 687	101	4000K	≥80	3411 728	107	5000K	≥80	3461 741	108
LNLED4*E	2 x 36W	Linear	3000K	≥80	3694 687	100	4000K	≥80	3913 728	106	5000K	≥80	3990 741	108
LNLED5*E	3 x 36W	Linear	3000K	≥80	5391 703	112	4000K	≥80	5712 745	119	5000K	≥80	5809 758	121
LNLED6*E	2 x 58W	Linear	3000K	≥80	6104 703	107	4000K	≥80	6467 745	113	5000K	≥80	6561 758	115
LNLED7*E	3 x 58W	Linear	3000K	≥80	6916 703	110	4000K	≥80	7327 745	116	5000K	≥80	7490 758	119

① All values are typical (+/- 10%).

LED Luminaires | Linear | Increased Safety | ATEX / IECEX

ATX™ Linmaster™ LED Zone 2 Series Nonmetallic Luminaires

Standard or with Emergency Battery Backup
Increased Safety

ATEX/IECEX: Zone 2, 21 and 22 | Ⓢ 3 GD, 2 D | IP66 | IK10

Electrical Specifications — AC Driver at 230 Vac

Model	Voltage	Input Power (Watt)	Input Current (A)	Power Factor (PF)	Total Harmonic Distortion (THD)
Standard Model					
LNLED3	230 Vac	26	0.118	>0.9	<20%
LNLED4	230 Vac	30	0.136	>0.9	<20%
LNLED5	230 Vac	42	0.186	>0.9	<20%
LNLED6	230 Vac	51	0.225	>0.9	<20%
LNLED7	230 Vac	57	0.251	>0.9	<20%
Emergency Model 90 Minutes					
LNLED3*E	230 Vac	32	0.160	>0.8	<20%
LNLED4*E	230 Vac	36	0.220	>0.8	<20%
LNLED5*E	230 Vac	48	0.220	>0.9	<20%
LNLED6*E	230 Vac	57	0.257	>0.9	<20%
LNLED7*E	230 Vac	63	0.283	>0.9	<20%
Emergency Model 180 Minutes					
LNLED3*H	230 Vac	32	0.160	>0.8	<20%
LNLED4*H	230 Vac	37	0.179	>0.8	<20%
LNLED5*H	230 Vac	48	0.220	>0.9	<20%
LNLED6*H	230 Vac	57	0.257	>0.9	<20%
LNLED7*H	230 Vac	63	0.283	>0.9	<20%

Electrical Specifications — DC Driver at 24 Vdc

Model	Voltage	Input Power (Watt)	Input Current (A)	Power Factor (PF)	Total Harmonic Distortion (THD)
LNLED3	24 Vdc	24	1.0	N/A	N/A
LNLED4	24 Vdc	27	1.1	N/A	N/A
LNLED5	24 Vdc	43	1.8	N/A	N/A
LNLED6	24 Vdc	50	2.1	N/A	N/A
LNLED7	24 Vdc	57	2.4	N/A	N/A

LED Luminaires | Linear | Increased Safety | ATEX / IECEx

ATX™ Linmaster™ LED Zone 2 Series Nonmetallic Luminaires

Standard or with Emergency Battery Backup
Increased Safety

ATEX/IECEx: Zone 2, 21 and 22 | Ⓢ II 3 GD, 2 D | IP66 | IK10

Temperature Codes — Gas

Model Type	Gas — T Rating				
	Ta = +40 °C (+104 °F)	Ta = +50 °C (+122 °F)	Ta = +55 °C (+131 °F)	Ta = +60 °C (+140 °F)	Ta = +65 °C (+149 °F)
LNLED3	T6	T5	T5	T4	T4
LNLED4	T5	T4	T4	T4	—
LNLED5	T6	T5	T5	T5	T4
LNLED6	T6	T5	T5	T4	—
LNLED7	T5	T4	T4	T4	—

Temperature Codes — Dust

Model Type	Dust — Surface T°				
	Ta = +40 °C (+104 °F)	Ta = +50 °C (+122 °F)	Ta = +55 °C (+131 °F)	Ta = +60 °C (+140 °F)	Ta = +65 °C (+149 °F)
LNLED3	+54 °C (+129 °F)	+64 °C (+147 °F)	+69 °C (+156 °F)	+74 °C (+165 °F)	+79 °C (+174 °F)
LNLED4	+55 °C (+131 °F)	+65 °C (+149 °F)	+70 °C (+158 °F)	+75 °C (+167 °F)	—
LNLED5	+53 °C (+127 °F)	+63 °C (+145 °F)	+68 °C (+154 °F)	+73 °C (+163 °F)	+78 °C (+172 °F)
LNLED6	+54 °C (+129 °F)	+64 °C (+147 °F)	+69 °C (+156 °F)	+74 °C (+165 °F)	—
LNLED7	+56 °C (+133 °F)	+66 °C (+151 °F)	+71 °C (+160 °F)	+76 °C (+169 °F)	—

“T” Numbers Represent the Maximum Temperature

“T” #	T1	T2	T3	T4	T5	T6
Temp. Range °C (°F)	+301 to +450 (+547 to +842)	+201 to +300 (+394 to +572)	+136 to +200 (+277 to +392)	+101 to +135 (+214 to +275)	+86 to +100 (+187 to +212)	+85 (+185)

Ⓢ Above temperature code tables are related to standard luminaires with AC driver only. To see the temperature codes for emergency luminaire or for standard luminaire with DC driver, refer to the instruction manual.

ATX™ Linmaster™ LED Zone 2 Series Nonmetallic Luminaires

Standard or with Emergency Battery Backup
Increased Safety

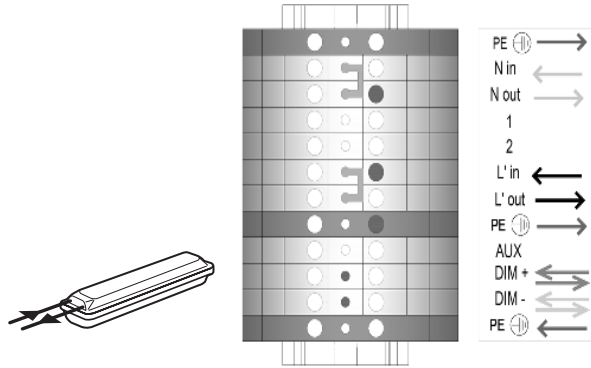
ATEX/IECEx: Zone 1 and 2- 21 and 22 | II 2 GD | IP66 | IK10

Wiring Diagrams

Version: S

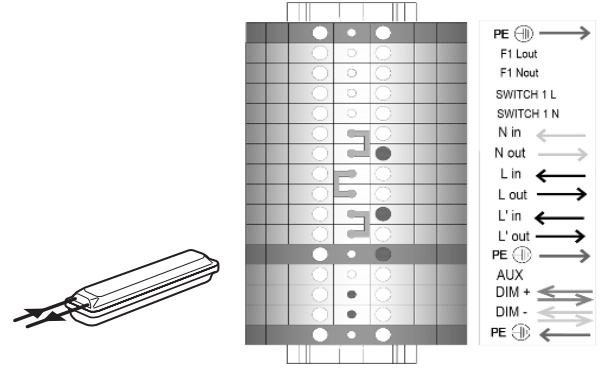
Standard Model

Standard (Single Phase), 3 Entries, 1 at one end and 2 at the other



Emergency Model

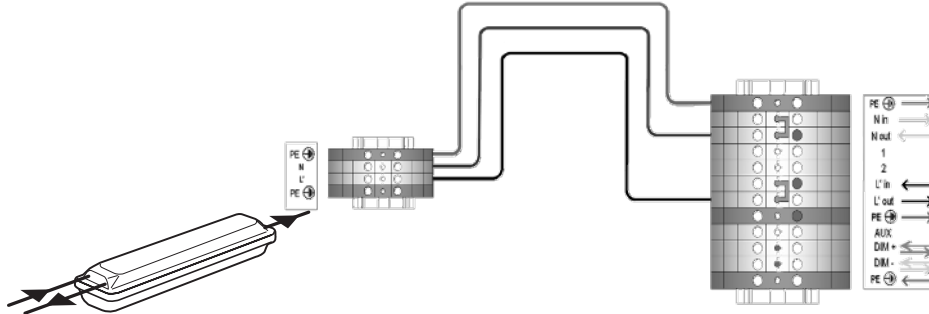
Standard (Single Phase), 3 Entries, 1 at one end and 2 at the other



Version : L

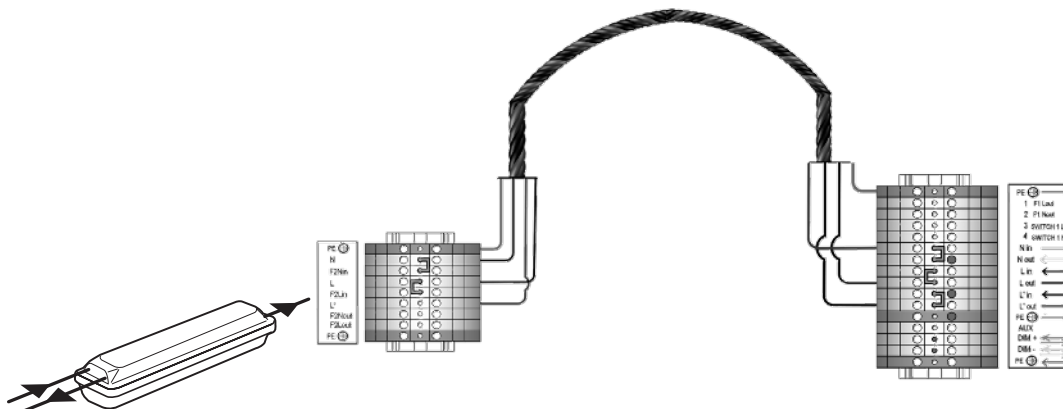
Standard Model

Dual Loop In / Out — Through Wiring (Single Phase), 3 Entries, 1 at one end and 2 at the other



Emergency Model

Dual Loop In / Out — Through Wiring (Single Phase), 3 Entries, 1 at one end and 2 at the other



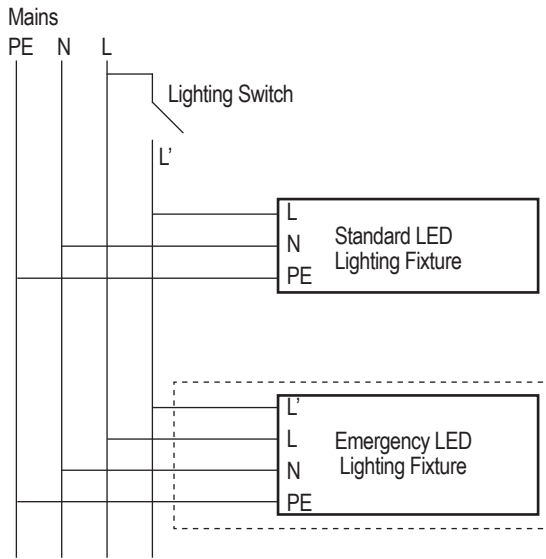
LED Luminaires | Linear | Increased Safety | ATEX / IECEx

ATX™ Linmaster™ LED Zone 2 Series Nonmetallic Luminaires

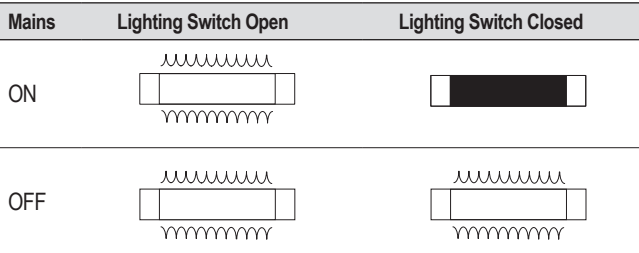
Standard or with Emergency Battery Backup
Increased Safety

ATEX/IECEX: Zone 2, 21 and 22 | © II 3 GD, 2 D | IP66 | IK10

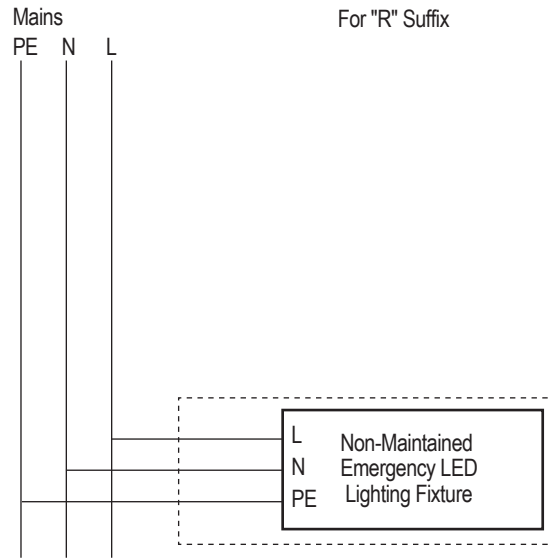
Wiring Diagram for Maintained Emergency Linmaster



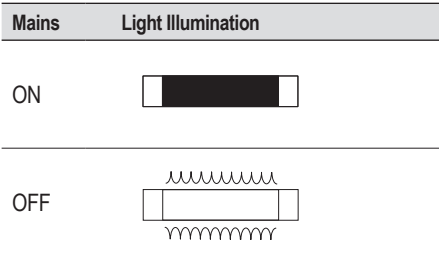
Emergency Function Diagram - Maintained



Wiring Diagram for Non-Maintained Emergency Linmaster



Emergency Function Diagram - Non-Maintained



LED Signals

Indicator Color	Timing	Function
Green	1 sec ON: 1 sec OFF	Normal charging ok, Battery not yet fully charged, No fault detected, Testing ok
Green	0.25 sec ON: 0.25 sec OFF	Functional / Duration Self-Test on-going
Green	Steady ON	Charging ok, Battery fully charged, No fault detected, Testing ok
Red	1 sec ON: 1 sec OFF	Fault condition, Installation issue, Battery is reverse, not connected, or shorted. Functional test failure, full duration test failure
LED Indicators OFF, LED Array ON	LED Indicators (Red and Green) OFF	No AC, Emergency mode ON

ATX™ Linmaster™ LED Zone 2 Series Nonmetallic Luminaires

Standard or with Emergency Battery Backup
Increased Safety

ATEX/IECEx: Zone 2, 21 and 22 | Ⓢ II 3 GD, 2 D | IP66 | IK10

Automatic Testing System (ATS) — Emergency Battery Backup Model — Functionality

At the completion of functional and full duration tests, and when AC power is present, LED indicators will display status of the emergency luminaire.




Functional Test	Full Duration Test
Starts within 24-48 hours after the initial power up of the luminaire	Starts within 5 to 26 days after the initial power up of the module
Occurs every 14 days after the initial aforementioned functional test	Occurs once every 364 days after the initial duration test
Lasts for 30 seconds	Lasts for full duration of the rated emergency period

At the completion of functional and full duration tests, LED indicator will display the status of the emergency luminaire when AC is present

Emergency Light Duration

Lumen Level	Battery Capacity	Duration	Light Output	Duration	Light Output
3K (LNLED3)	6 Ah – 6V	180 minutes	5000K CCT: 741 lumens	90 minutes	5000K CCT: 1278 lumens
4K (LNLED4)			5000K CCT: 741 lumens		5000K CCT: 1278 lumens
5K (LNLED5)			5000K CCT: 758 lumens		5000K CCT: 1482 lumens
6K (LNLED6)			5000K CCT: 758 lumens		5000K CCT: 1482 lumens
7K (LNLED7)			5000K CCT: 758 lumens		5000K CCT: 1482 lumens

Accessories and Replacement Parts

	Description	Weight in kg (lbs)	Catalog Number
Replacement Dome Cover			
	Diffused dome cover with gasket for 2ft Linmaster	0.8 (1.76)	LINDCVR2
	Diffused dome cover with gasket for 4ft Linmaster	1.4 (3.09)	LINDCVR4
	Clear dome cover with gasket for 2ft Linmaster	0.8 (1.76)	LINCCVR2
	Clear dome cover with gasket for 4ft Linmaster	1.4 (3.09)	LINCCVR4
Replacement Battery Pack and BMM			
	Replacement Battery pack (1 each)	0.73 (1.6)	BPILLED
	Replacement BMM (1 each)	0.65 (1.43)	BMMLED ①
Replacement Fuse Assembly			
	LNLED3 & LNLED5 Replacement Fuse Assembly (1 each)	N/0.02 (0.04)	APPFUSEZ1
Safety Cable			
	Safety Cable — Stainless Steel	0.2 (0.4)	LEDSC
Fixing Brackets for Surface Installation — Set of Two			
	Zinc plated steel	0.39 (0.85)	FEFBZ
Brackets for Surface Mounting — Set of Two			
	316 stainless steel	0.64 (1.4)	FESBS

① Not CE Marked.






ATX™ Linmaster™ LED Zone 2 Series Nonmetallic Luminaires

Standard or with Emergency Battery Backup

Increased Safety

ATEX/IECEX: Zone 2, 21 and 22 | Ⓢ II 3 GD, 2 D | IP66 | IK10

Accessories and Replacement Parts

	Description	Weight in kg (lbs)	Catalog Number	
Hinged Brackets for Adjusting Luminaire				
	Aluminum	0.75 (1.7)	FEHBA	
	316 stainless steel	0.57 (1.25)	FEHBS	
M8 Ring Bolts — Set of Two				
	Zinc plated steel	0.11 (0.2)	FERBM8Z	
Half Clamps Brackets for Pole Mounting — Set of two				
	Diameter for 1-1/4" to 1-1/2" pole: 42 mm to 49 mm (1.65" to 1.93")			
	• Zinc plated steel	0.34 (0.7)	FEHC49Z	
	• 316 stainless steel	0.34 (0.7)	FEHC49S	
	Diameter for 2" pole: 60 mm (2.3")			
	• Zinc plated steel	0.48 (1.1)	FEHC60Z	
	• 316 stainless steel	0.52 (1.2)	FEHC60S	
Linmaster mounting bracket				
	For 800mm mounting dimension	0.75 (1.7)	LNMB800	
Fall Prevention Kit — Safety chain retains fixture temporarily to ease installation				
	For M25 cable entry	0.76 (1.7)	FESCM25	
	For M20 cable entry	0.76 (1.7)	FESCM20	
	Description	Size in Millimeters (Inches)	Catalog Number	
	Warning label, straight arrow	Adhesive and divisible	327 x 109 (12.87 x 4.29)	BAESLABEL200 ①
	Warning label, inclined arrow	Adhesive and divisible	327 x 109 (12.87 x 4.29)	BAESLABEL201 ①

① Exit labels for use with only 3000lm model, BU driver and clear cover option.

ATX™ Linmaster™ LED Zone 2 Series Nonmetallic Luminaires

Standard or with Emergency Battery Backup

Increased Safety

ATEX/IECEX: Zone 1 and 2 - 21 and 22 | II 2 GD | IP66 | IK10

Replacement Drivers

Description	Weight in kg (lbs)	Catalog Number
LNLED3CBU*, LNLED3NBU*, LNLED3WBU* Replacement Driver (1 each)	0.95 (2.09)	APMZ050L135UD48
LNLED4CBU*, LNLED4NBU*, LNLED4WBU* Replacement Driver (1 each)	0.95 (2.09)	APMZ050L135UD56
LNLED5CBU*, LNLED5NBU*, LNLED5WBU* Replacement Driver (1 each)	0.95 (2.09)	APMZ050L135UD84
LNLED6CBU*, LNLED6NBU*, LNLED6WBU* Replacement Driver (1 each)	0.95 (2.09)	APMZ050L135UD96
LNLED7CBU*, LNLED7NBU*, LNLED7WBU* Replacement Driver (1 each)	0.95 (2.09)	APMZ050L135UD10
LNLED3HBU* Replacement Driver (1 each)	0.95 (2.09)	APMZ050L135UD42
LNLED4HBU* Replacement Driver (1 each)	0.95 (2.09)	APMZ050L135UD46
LNLED5HBU* Replacement Driver (1 each)	0.95 (2.09)	APMZ050L135UD89
LNLED6HBU* Replacement Driver (1 each)	0.95 (2.09)	APMZ050L135UD92
LNLED7HBU* Replacement Driver (1 each)	0.95 (2.09)	APMZ050L135UD95
LNLED3VBU* Replacement Driver (1 each)	0.95 (2.09)	APMZ050L135UD3
LNLED4VBU* Replacement Driver (1 each)	0.95 (2.09)	APMZ050L135UD30
LNLED5VBU* Replacement Driver (1 each)	0.95 (2.09)	APMZ050L135UD31
LNLED6VBU* Replacement Driver (1 each)	0.95 (2.09)	APMZ050L135UD3A
LNLED7VBU* Replacement Driver (1 each)	0.95 (2.09)	APMZ050L135UD32
LNLED3CB2*, LNLED3NB2*, LNLED3WB2* Replacement Driver (1 each)	0.95 (2.09)	APMZ050C130DC48
LNLED4CB2*, LNLED4NB2*, LNLED4WB2* Replacement Driver (1 each)	0.95 (2.09)	APMZ050C130DC56
LNLED5CB2*, LNLED5NB2*, LNLED5WB2* Replacement Driver (1 each)	0.95 (2.09)	APMZ050C130DC84
LNLED6CB2*, LNLED6NB2*, LNLED6WB2* Replacement Driver (1 each)	0.95 (2.09)	APMZ050C130DC96
LNLED7CB2*, LNLED7NB2*, LNLED7WB2* Replacement Driver (1 each)	0.95 (2.09)	APMZ050C130DC10
LNLED3HB2* Replacement Driver (1 each)	0.95 (2.09)	APMZ050C130DC42
LNLED4HB2* Replacement Driver (1 each)	0.95 (2.09)	APMZ050C130DC46
LNLED5HB2* Replacement Driver (1 each)	0.95 (2.09)	APMZ050C130DC89
LNLED6HB2* Replacement Driver (1 each)	0.95 (2.09)	APMZ050C130DC92
LNLED7HB2* Replacement Driver (1 each)	0.95 (2.09)	APMZ050C130DC95
LNLED3VB2* Replacement Driver (1 each)	0.95 (2.09)	APMZ050C130DC3
LNLED4VB2* Replacement Driver (1 each)	0.95 (2.09)	APMZ050C130DC30
LNLED5VB2* Replacement Driver (1 each)	0.95 (2.09)	APMZ050C130DC31
LNLED6VB2* Replacement Driver (1 each)	0.95 (2.09)	APMZ050C130DC3A
LNLED7VB2* Replacement Driver (1 each)	0.95 (2.09)	APMZ050C130DC32

Ⓢ Not CE Marked.

LED Luminaires | Linear | Increased Safety | ATEX / IECEx

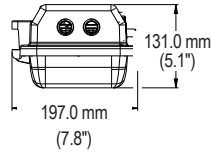
ATX™ Linmaster™ LED Zone 2 Series Nonmetallic Luminaires

Standard or with Emergency Battery Backup
Increased Safety

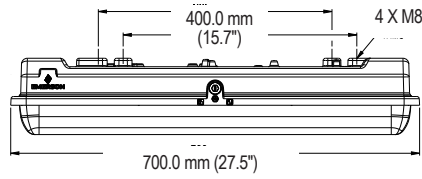
ATEX/IECEx: Zone 2, 21 and 22 | Ⓢ II 3 GD, 2 D | IP66 | IK10

Luminaire Dimensions in Millimeters (Inches)

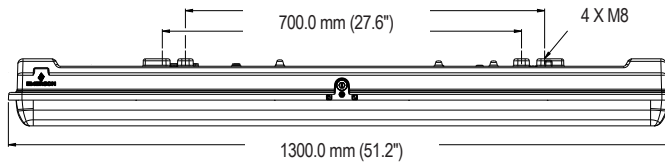
End View



Side View — 0.785 m (2.58 ft)



Side View — 1.39 m (4.56 ft) Version



Luminaire Specifications

Model	Length m (ft)	Weight in kg (lb)
Standard Model		
LNLED3	0.79 (2.58)	5.00 (11.00)
LNLED4		
LNLED5	1.39 (4.56)	8.00 (17.50)
LNLED6		
LNLED7		
Emergency Model		
LNLED3	0.79 (2.58)	6.00 (13.00)
LNLED4		
LNLED5	1.39 (4.56)	10.00 (22.00)
LNLED6		
LNLED7		

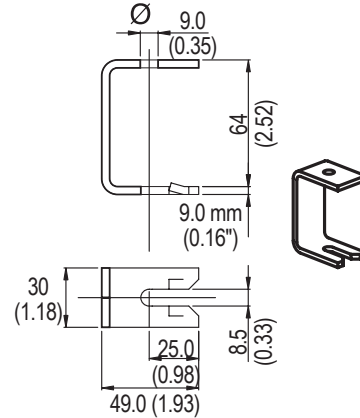
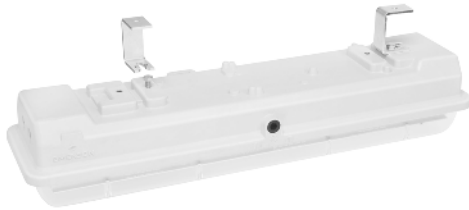
ATX™ Linmaster™ LED Zone 2 Series Nonmetallic Luminaires

Standard or with Emergency Battery Backup
Increased Safety

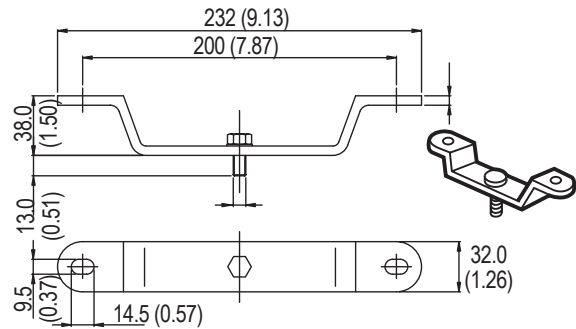
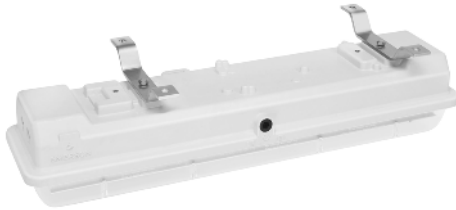
ATEX/IECEx: Zone 2, 21 and 22 | © II 3 GD, 2 D | IP66 | IK10

Mounting Options Dimensions in Millimeters (Inches)

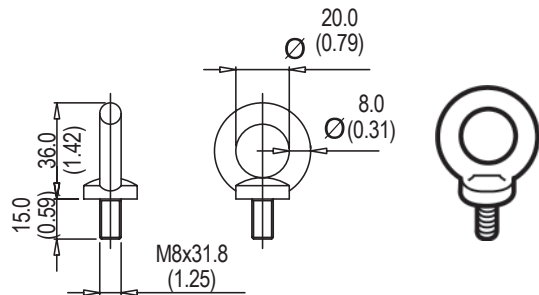
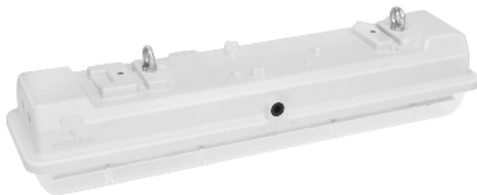
FEFBZ: zinc plated steel — Set of two quick fixing brackets for ease of surface mounting



FESBS: 316 stainless steel — Set of two brackets for surface mounting



FERBM8Z: zinc plated steel — Set of two ring bolts



LED Luminaires | Linear | Increased Safety | ATEX / IECEx

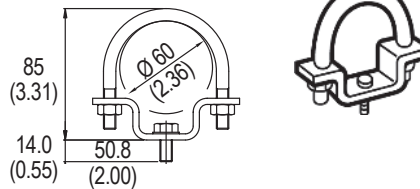
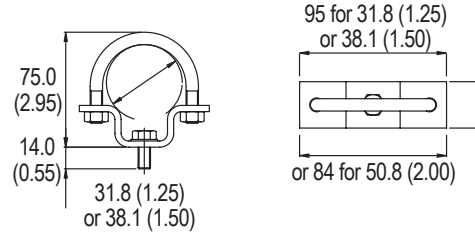
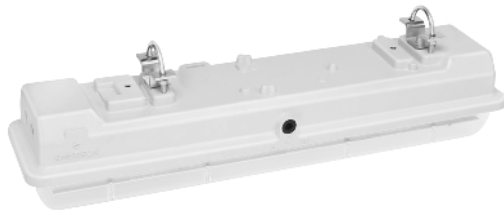
ATX™ Linmaster™ LED Zone 2 Series Nonmetallic Luminaires

Standard or with Emergency Battery Backup
Increased Safety

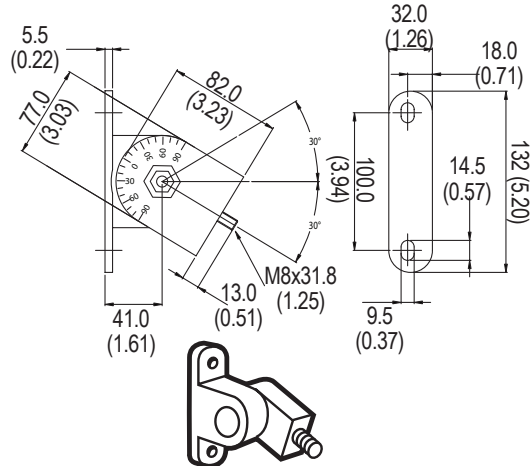
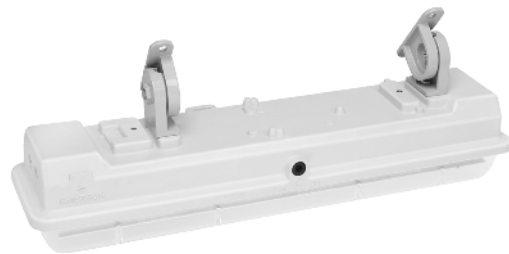
ATEX/IECEx: Zone 2, 21 and 22 | Ⓢ 3 GD, 2 D | IP66 | IK10

Mounting Options Dimensions in Millimeters (Inches)

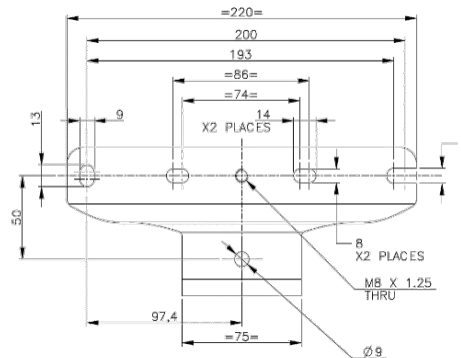
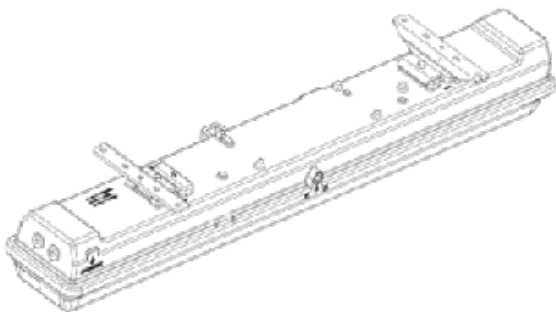
FEHC49Z: zinc plated steel or FEHC49S: 316 stainless steel — Set of two clamps for pole diameter 42 mm to 49 mm (for 1-1/4" to 1-1/2" pole).
FEHC60Z: zinc plated steel or FEHC60S: 316 stainless steel — Set of two clamps for pole diameter 60 mm (for 2" pole).



FEHBA: aluminum or FEHBS: 316 stainless steel — Set of two hinged brackets for adjusting luminaire.



MOUNTING AT 800 mm CD— Only For 1300mm Model



LED Luminaires | Linear | Increased Safety | ATEX / IECEx